

LOAD RATINGS IN LBS WITH OUTRIGGERS AND STABILIZERS EXTENDED										JIB LOAD RATINGS WITH OUTRIGGERS AND STABILIZERS EXTENDED									
LMI CODE #1										FIXED JIB				TELESCOPIC JIB					
OPERATING RADIUS (FT)	LOADED BOOM ANGLE	BOOM LENGTH AND MARKER	BASE							OPERATING RADIUS (FT)	LOADED BOOM ANGLE	BOOM LENGTH FOR ALL BOOM LENGTHS SEE WARNING NOTE 4	OPERATING RADIUS (FT)	LOADED BOOM ANGLE	BOOM LENGTH FOR ALL BOOM LENGTHS SEE WARNING NOTE 4	OPERATING RADIUS (FT)	LOADED BOOM ANGLE	BOOM LENGTH FOR ALL BOOM LENGTHS SEE WARNING NOTE 4	
			A	B	C	D	LMI CODE #2	LMI CODE #3	LMI CODE #4										
5	79	56000	28 FT	47 FT	62 FT	77 FT	92 FT												
8	72	41560																	
10	68	35030	78	20500															
12	63	30330	75	20500	79	20500													
15	56	25230	71	20500	77	20500	80	15900											
20	42	19300	65	17780	72	16780	76	13540	79	10200									
25	21	13760	58	14460	67	13610	73	11710	76	9290	25	79	5600	79	5400				
30			50	11810	62	11390	69	10160	73	8330	30	77	5300	77	5100	79	3400		
35			41	8800	56	8960	64	8830	70	7320	35	75	4960	75	4700	77	3300		
40			30	6800	50	6950	60	7040	66	6460	40	72	4490	72	4230	76	3200		
45			10	5350	43	5530	55	5610	63	5660	45	70	4080	70	3820	74	3040		
50					36	4460	51	4540	59	4590	50	67	3710	67	3440	72	2800		
55					26	3620	45	3710	55	3760	55	65	3380	65	3100	69	2630		
60					9	2940	39	3050	51	3100	60	62	3080	62	2810	67	2480		
65							33	2500	47	2550	65	59	2690	59	2400	65	2310		
70							24	2050	42	2100	70	56	2230	56	1940	63	2110		
75							8	1650	36	1720	75	53	1850	53	1560	60	1940		
80									30	1390	80	50	1510	50	1220	58	1680		
85									22	1100	85	46	1230	46	940	55	1390		
90									8	840	90	42	980	42	680	52	1140		
95											95	38	750	38	460	49	910		
100											100					46	710		
105											105					43	530		

460 LBS. 270 LBS. 210 LBS. 170 LBS. 140 LBS. DEDUCTIONS FOR STOWED FIXED JIB
 690 LBS. 410 LBS. 310 LBS. 250 LBS. 210 LBS. DEDUCTIONS FOR STOWED TELESCOPIC JIB

- WARNING**
1. THE OPERATOR MUST READ AND UNDERSTAND THE OWNER'S MANUAL BEFORE OPERATING THIS CRANE.
 2. POSITIONING OR OPERATION OF CRANE BEYOND AREAS SHOWN ON THIS CHART IS NOT INTENDED OR APPROVED EXCEPT WHERE SPECIFIED IN OWNER'S MANUAL.
 3. LOADED BOOM ANGLES AT SPECIFIED BOOM LENGTHS GIVE ONLY AN APPROXIMATION OF THE OPERATING RADIUS. THE BOOM ANGLE BEFORE LOADING SHOULD BE GREATER TO ACCOUNT FOR DEFLECTIONS. DO NOT EXCEED THE OPERATING RADIUS FOR RATED LOADS.
 4. THE OPERATING RADIUS SHOWN IN THE JIB RATING CHART IS FOR FULLY EXTENDED BOOM ONLY. WHEN BOOM IS NOT FULLY EXTENDED, USE ONLY LOADED BOOM ANGLE TO DETERMINE LOAD RATING OF JIB.
 5. BOOM MUST BE FULLY RETRACTED WHEN JIB IS ERECTED, BEFORE LOWERING BOOM THRU THIS AREA.
 6. FOR BOOM ANGLES NOT SHOWN ON JIB LOAD RATING CHART, USE RATING OF NEXT LOWER BOOM ANGLE.
 7. FOR BOOM LENGTHS NOT SHOWN, USE RATING OF NEXT SHORTER OR LONGER BOOM LENGTH, WHICHEVER IS LESS. FOR RADII NOT SHOWN, USE RATING OF NEXT LONGER RADIUS.
 8. CRANE LOAD RATINGS ON OUTRIGGERS ARE BASED ON FREELY SUSPENDED LOADS WITH THE MACHINE LEVELED AND STANDING ON A FIRM UNIFORM SUPPORTING SURFACE. NO ATTEMPT SHALL BE MADE TO MOVE A LOAD HORIZONTALLY ON THE GROUND IN ANY DIRECTION.
 9. PRACTICAL WORKING LOADS DEPEND ON SUPPORTING SURFACE, WIND, AND OTHER FACTORS AFFECTING STABILITY SUCH AS HAZARDOUS SURROUNDINGS, EXPERIENCE OF PERSONNEL, AND PROPER HANDLING. ALL OF WHICH MUST BE TAKEN INTO ACCOUNT BY THE OPERATOR.
 10. THE MAXIMUM LOAD WHICH MAY BE TELESCOPED IS LIMITED BY HYDRAULIC PRESSURE, BOOM ANGLE, AND BOOM LUBRICATION. IT IS SAFE TO ATTEMPT TO TELESCOPE ANY LOAD WITHIN THE LIMITS OF THE LOAD RATING CHART. BOOM MUST BE FULLY RETRACTED AGAINST BOOM STOPS AT ALL TIMES WHEN LIFTING MINIMUM BOOM LENGTH CAPACITY LOADS.

- INFORMATION**
1. DEDUCTIONS MUST BE MADE FROM RATED LOADS FOR STOWED JIB, OPTIONAL ATTACHMENTS, HOOKS, AND LOAD-BLOCKS (SEE DEDUCTION CHART). WEIGHTS OF SLINGS AND ALL OTHER LOAD HANDLING DEVICES SHALL BE CONSIDERED A PART OF THE LOAD.
 2. CRANE LOAD RATINGS WITH OUTRIGGERS ARE BASED ON OUTRIGGERS AND STABILIZERS EXTENDED AND SET WITH MACHINE LEVELED.
 3. LOAD RATINGS ABOVE THE HEAVY LINE ARE STRUCTURALLY LIMITED CAPACITIES. LOAD RATINGS BELOW THE HEAVY LINE ARE STABILITY LIMITED CAPACITIES AND DO NOT EXCEED 85% OF TIPPING.

- DEFINITIONS**
1. OPERATING RADIUS IS THE HORIZONTAL DISTANCE FROM THE AXIS OF ROTATION TO THE CENTER OF THE VERTICAL HOIST LINE OR TACKLE WITH LOAD APPLIED.
 2. LOADED BOOM ANGLE AS SHOWN IN THE COLUMN HEADED BY α , IS THE INCLUDED ANGLE BETWEEN THE HORIZONTAL AND LONGITUDINAL AXES OF THE BOOM BASE AFTER LIFTING RATED LOAD AT RATED RADIUS.

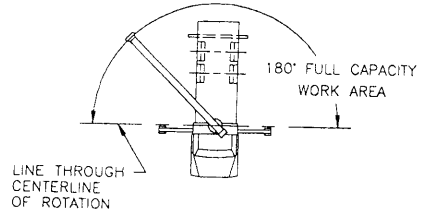


Boom Trucks

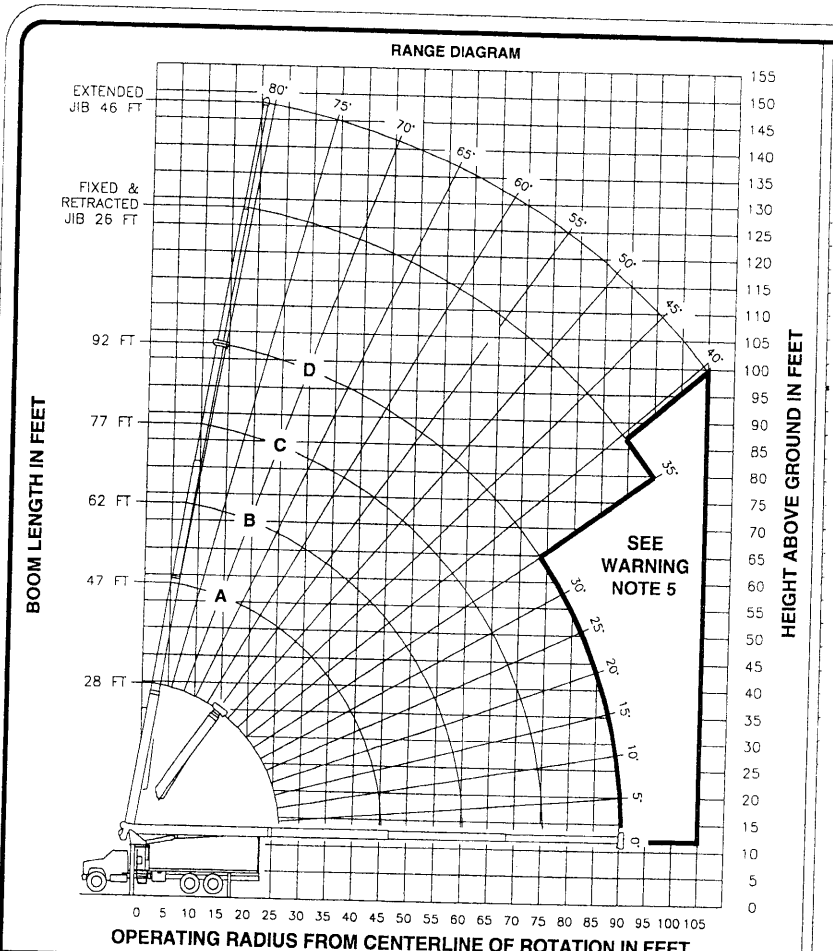
MODELS
2892C & 2892T

CRANE MEETS ANSI B30.5 REQUIREMENTS

7300054-002 NR



AREA OF OPERATION



LMI OPERATING CODES

SETTING	CRANE CONFIGURATION	SETTING	CRANE WITH PERSONNEL LIFTING PLATFORM
#1	--- MAIN BOOM	#5	--- PERSONNEL LIFTING PLATFORM ON MAIN BOOM
#2	--- FIXED JIB	#6	--- PERSONNEL LIFTING PLATFORM ON FIXED JIB
#3	--- TELESCOPIC JIB-RETRACTED	#7	--- PERSONNEL LIFTING PLATFORM ON TELESCOPIC JIB-RETRACTED
#4	--- TELESCOPIC JIB-EXTENDED	#8	--- PERSONNEL LIFTING PLATFORM ON TELESCOPIC JIB-EXTENDED

ALLOWABLE LINE PULL

1 PART LINE	2 PART LINE	3 PART LINE	4 PART LINE	5 PART LINE	6 PART LINE	7 PART LINE	WARNING
8500 LBS	17000 LBS	25500 LBS	34000 LBS	42500 LBS	51000 LBS	56000 LBS	
7400 LBS	14800 LBS	22200 LBS	29600 LBS	37000 LBS	44400 LBS	51800 LBS	<p>ANTI-TWO-BLOCK SYSTEM MUST BE IN GOOD OPERATING CONDITION BEFORE OPERATING CRANE.</p> <p>REFER TO THE OWNER'S MANUAL.</p> <p>KEEP AT LEAST 3 WRAPS OF LOAD LINE ON THE DRUM AT ALL TIMES.</p> <p>9/16" 6X25 IWRC (3.5:1 SF) - 29750 LBS MIN BREAKING STRENGTH</p> <p>9/16" ROT RESISTANT (5.0:1 SF) - 37000 LBS MIN BREAKING STRENGTH</p>

DEDUCTIONS FROM RATED LOADS FOR LOAD HANDLING DEVICES SUPPLIED BY MANITOWOC BOOM TRUCKS, INC.

AUXILIARY BLOCK	50 LBS
AUXILIARY SHEAVE	50 LBS
OVERHAUL BALL	SEE OVERHAUL BALL MFG. NAMEPLATE
LOAD BLOCK	SEE BLOCK MFG. NAMEPLATE
HOSE REEL	140 LBS
SWING AROUND JIB	SEE LOAD CHART

WARNING
LIFTING OFF THE MAIN BOOM POINT WHILE THE SWING AROUND JIB IS ERECTED IS NOT INTENDED OR APPROVED.