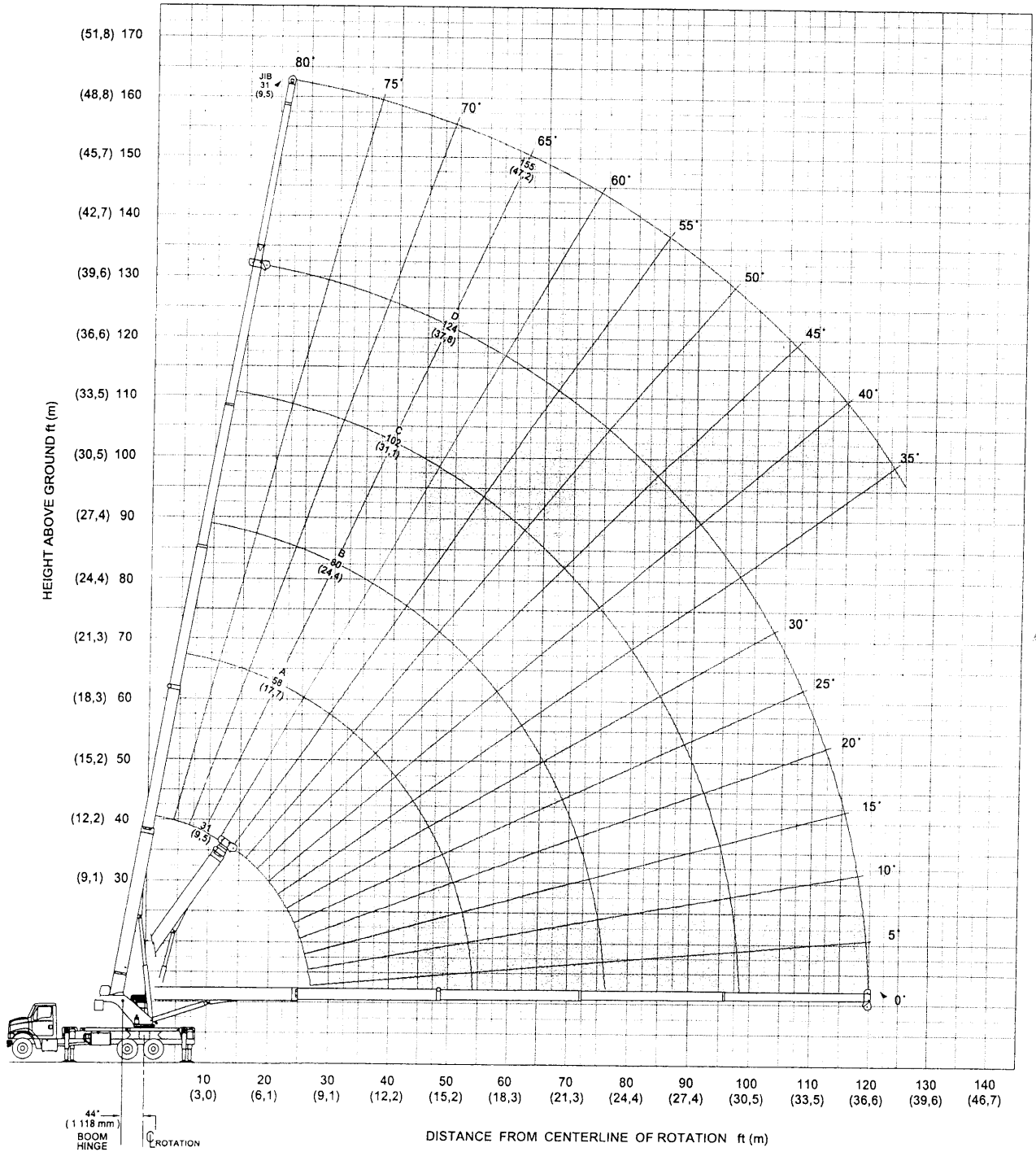


boom/jib range diagram

10706 30 100

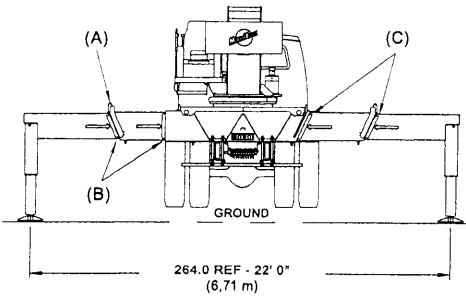
24

38124SHL Range Diagram - Fully Extended



44" (1118 mm) BOOM HINGE POINT
 C ROTATION

DISTANCE FROM CENTERLINE OF ROTATION ft (m)



- (A) Pins must be disengaged for this outrigger configuration
- (B) Mark indicates beam is fully extended
- (C) Outrigger beams must be extended to mark

NOTE: Use this chart only when all outriggers are fully extended.

model 38124SHL



boom/jib load charts

38124SHL Load Ratings Fully Extended Outrigger Spread

38124SHL Jib Load Ratings

Boom/Jib ft (m)	A		B		C		D		Fixed Jib	
	31 (9,5)	58 (17,7)	80 (24,4)	102 (31,1)	124 (37,8)	31 (9,5)	Boom/Jib ft (m)	Operating Radius ft (m)	31 (9,5)	Operating Radius ft (m)
Operating Radius ft (m)	∠ lb (kg)	∠ lb (kg)	∠ lb (kg)	∠ lb (kg)	∠ lb (kg)	∠ lb (kg)	∠ lb (kg)	∠ lb (kg)	∠ lb (kg)	∠ lb (kg)
5 (1,5)	75° 76,000 (34 473)									5 (1,5)
8 (2,4)	69° 60,500 (27 442)									8 (2,4)
10 (3,1)	64° 52,550 (23 836)									10 (3,1)
12 (3,7)	60° 46,600 (21 137)	75° 25,000 (11 340)								12 (3,7)
15 (4,6)	53° 39,600 (17 962)	73° 25,000 (11 340)	79° 21,500 (9 752)							15 (4,6)
20 (6,1)	40° 31,330 (14 211)	67° 25,000 (11 340)	75° 19,700 (8 936)	80° 14,500 (6 577)						20 (6,1)
25 (7,6)	22° 24,100 (10 932)	62° 22,840 (10 360)	71° 18,200 (8 255)	77° 13,500 (6 123)	80° 8,450 (3 833)					25 (7,6)
30 (9,1)		56° 19,550 (8 868)	67° 16,250 (7 371)	74° 12,820 (5 815)	78° 8,150 (3 697)			80° 4,000 (1 814)		30 (9,1)
35 (10,7)		49° 16,100 (7 303)	63° 14,540 (6 595)	71° 11,380 (5 162)	75° 7,800 (3 538)			78° 3,850 (1 746)		35 (10,7)
40 (12,2)		42° 12,900 (5 851)	59° 13,070 (5 928)	68° 10,160 (4 608)	72° 7,280 (3 302)			76° 3,700 (1 678)		40 (12,2)
45 (13,7)		34° 10,540 (4 781)	54° 10,800 (4 899)	65° 9,370 (4 250)	70° 6,780 (3 075)			74° 3,550 (1 610)		45 (13,7)
50 (15,2)		23° 8,720 (3 955)	50° 9,000 (4 082)	61° 8,430 (3 824)	67° 6,160 (2 794)			72° 3,400 (1 542)		50 (15,2)
55 (16,8)			44° 7,570 (3 434)	58° 7,620 (3 456)	65° 5,540 (2 513)			70° 3,250 (1 474)		55 (16,8)
60 (18,3)			39° 6,400 (2 903)	54° 6,530 (2 962)	62° 5,000 (2 268)			68° 3,080 (1 397)		60 (18,3)
65 (19,8)			32° 5,430 (2 463)	50° 5,570 (2 527)	59° 4,520 (2 050)			66° 2,910 (1 320)		65 (19,8)
70 (21,3)			24° 4,610 (2 091)	46° 4,760 (2 159)	56° 4,090 (1 855)			64° 2,750 (1 247)		70 (21,3)
75 (22,9)			12° 3,900 (1 769)	42° 4,060 (1 842)	53° 3,700 (1 678)			62° 2,600 (1 179)		75 (22,9)
80 (24,4)				37° 3,470 (1 574)	50° 3,350 (1 520)			60° 2,460 (1 116)		80 (24,4)
85 (25,9)				32° 2,940 (1 334)	47° 3,020 (1 370)			58° 2,320 (1 052)		85 (25,9)
90 (27,4)				25° 2,480 (1 125)	43° 2,560 (1 161)			55° 2,170 (984)		90 (27,4)
95 (29,0)				17° 2,060 (934)	40° 2,150 (975)			53° 1,930 (875)		95 (29,0)
100 (30,5)					35° 1,790 (812)			51° 1,720 (780)		100 (30,5)
105 (32,0)					31° 1,460 (662)			48° 1,530 (694)		105 (32,0)
110 (33,5)					25° 1,160 (526)			45° 1,350 (612)		110 (33,5)
115 (35,1)					18° 880 (399)			43° 1,200 (544)		115 (35,1)
120 (36,6)								40° 1,020 (463)		120 (36,6)
125 (38,0)								36° 800 (363)		125 (38,0)
Reduction*	450 (204)	240 (109)	180 (82)	140 (64)	120 (54)					

*stowed fixed jib

Meets ANSI B30.5 Requirements - Do not operate crane or accessories within 10' (3.05m) of live power lines.
 NOTICE: This capacity chart is for reference only and must not be used for lifting purposes.

model 38124SHL

